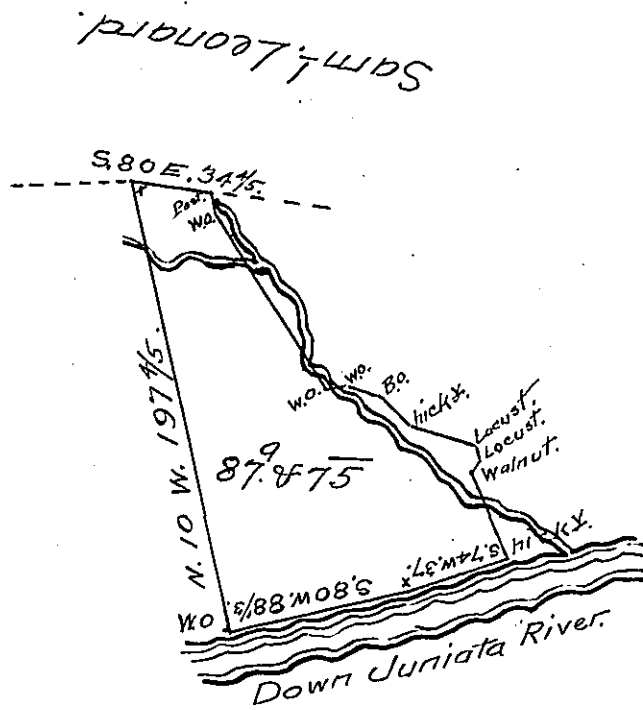


*Courses and distances
from Post to hickory at river.*

- S. 13 E. - 9 W.O.
- S. 30 E - 88 W.O.
- East - 9 1/2 W.O.
- S. 68 E. - 15 B.O.
- S. 50 E. - 17 1/2 hick.
- S. 67 E. - 30 Locust
- S. 37 E. - 5 1/2 Locust
- S. 34 1/2 W. - 6 1/2 walnut
- S. 16 1/2 E. - 42 hick. on
Bank Juniata river.



A Draught of eighty seven acres and seventy five perches of land with six per Cent for roads situate in Ferrimanagh township in Milfflin, formerly in Cumberland, County which is part of a tract of land surveyed 9th May 1761 in pursuance of a warrant to John Lycans dated 3^d February 1755 said to contain 323 acres but now found to contain 365⁹/₃₄ with six per Cent. The above part surveyed and divided 4th January 1793. Examined 28th Feb^y 1811.

Michael M. Monahan D.S.

To Andrew Porter Esquire }
Surveyor General of Pennsylvania }

IN TESTIMONY that the above is a copy of the original remaining on file in the Department of Internal Affairs of Pennsylvania, made conformably to an Act of Assembly approved the 16th day of February, 1833, I have hereunto set my Hand and caused the Seal of said Department to be affixed at Harrisburg, this Twenty ninth day of September 1905.

Loac R. Brown
Secretary of Internal Affairs.